

---

# **User manual of Direct Thermal Barcode Printer**

**Brand: XPRINTER**

**Model: XP-420B**

**Paper size: A6 size (100mm x 150mm)**

---

# CONTENT

Instructions:

Clicking at each topic below will bring you to the page directly.

<b>A) Equipment checklist</b>	<b>3</b>
<b>B) Printer parts</b>	<b>4</b>
<b>C) Download &amp; save the driver file</b>	<b>6</b>
<b>D) Installation</b>	<b>9</b>
<b>E) Printer setting</b>	<b>14</b>
<b>F) Size setting</b>	<b>16</b>

# A) Equipment checklist

The equipment provided in the box.

1. Barcode Printer

2. Power Adapter



5/6. Paper Spindle

4. USB Cable

3. Power Cord

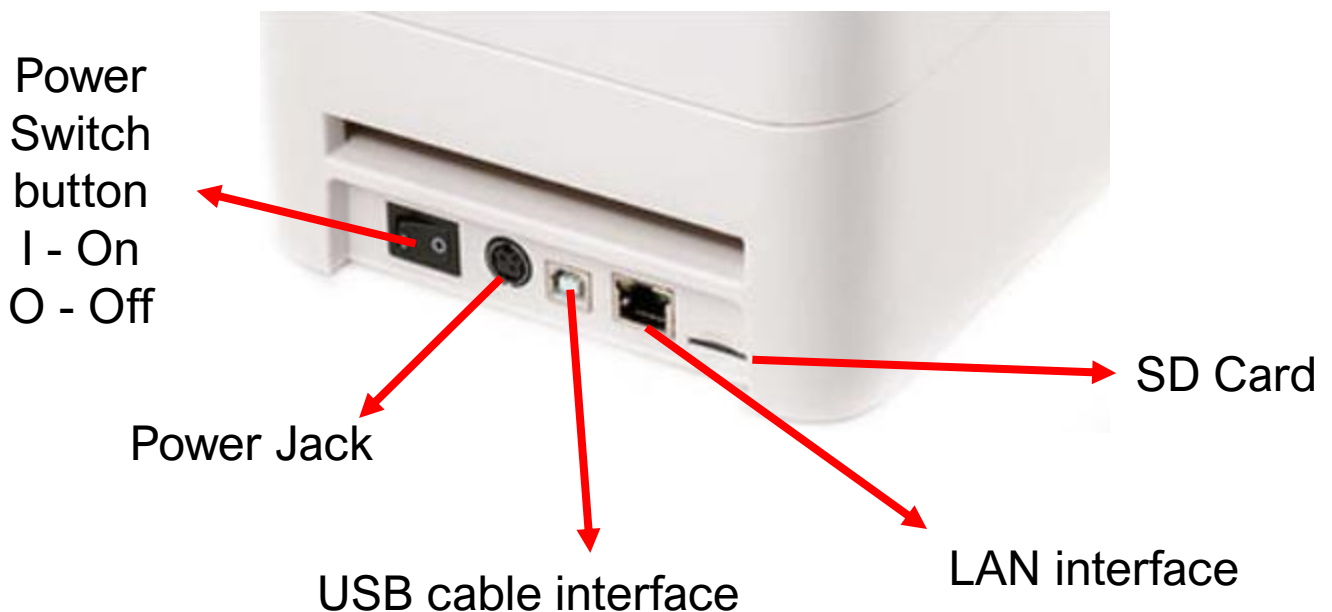
## B) Printer parts

Below is the printer descriptions.

Front surface

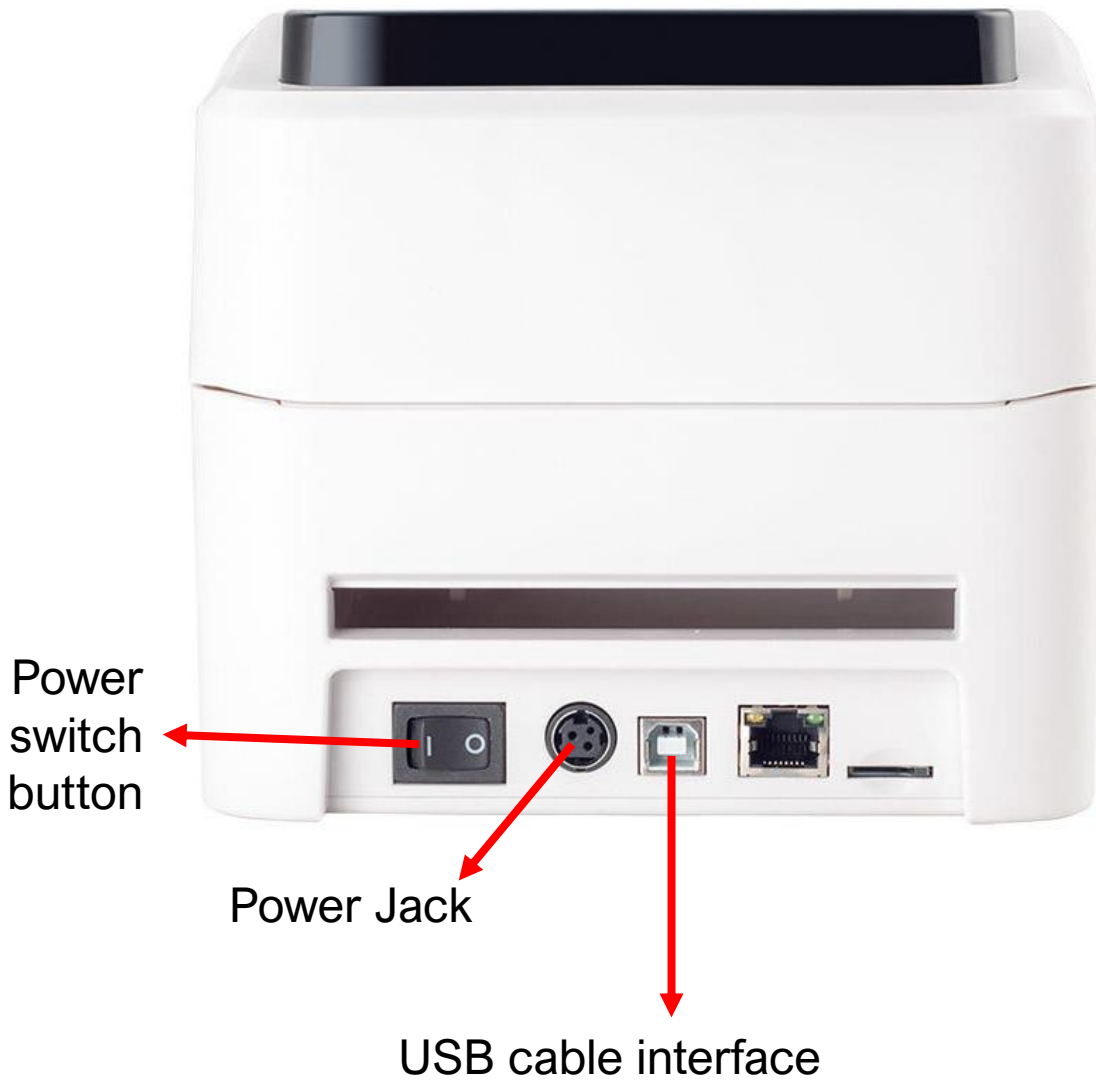


Back surface



## B) Printer parts

Connect the printer with a PC/laptop.



- Plug in the battery and the cable to connect with a PC/Laptop.
- Then, turn on the **Power Switch** button.
- The symbol meaning:
  - I - On
  - O - Off

## C) Download & save the driver file

Download the driver and install it on the PC/Laptop before the thermal printer can be used.

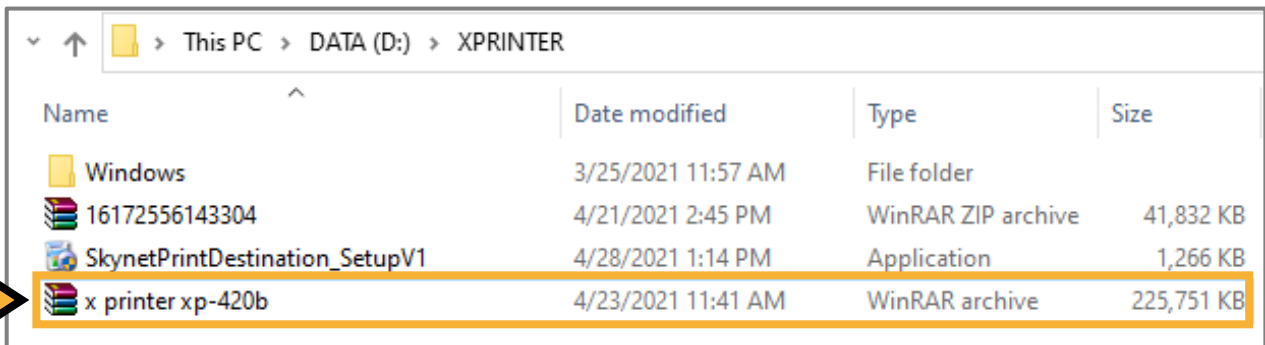
### Step 1

From the link given, [www.skynet.com.my/labelprinter](http://www.skynet.com.my/labelprinter), select a model (X-Printer 420B) and download the **Driver**.



### Step 2

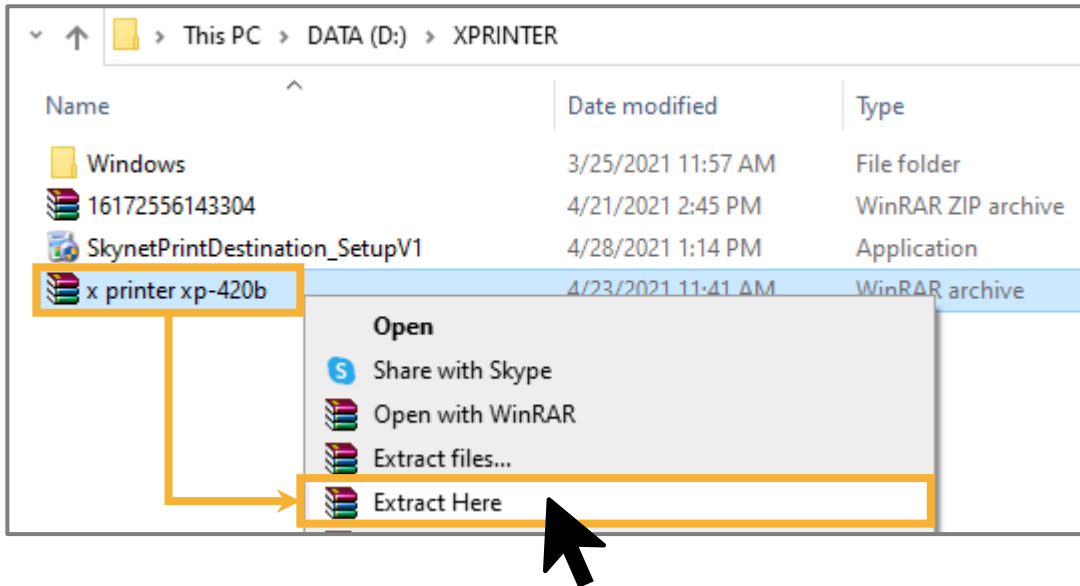
Create a folder for Xprinter XP-420B.  
Then, save the ZIP file that already been downloaded into this folder.



# C) Download & save the driver file

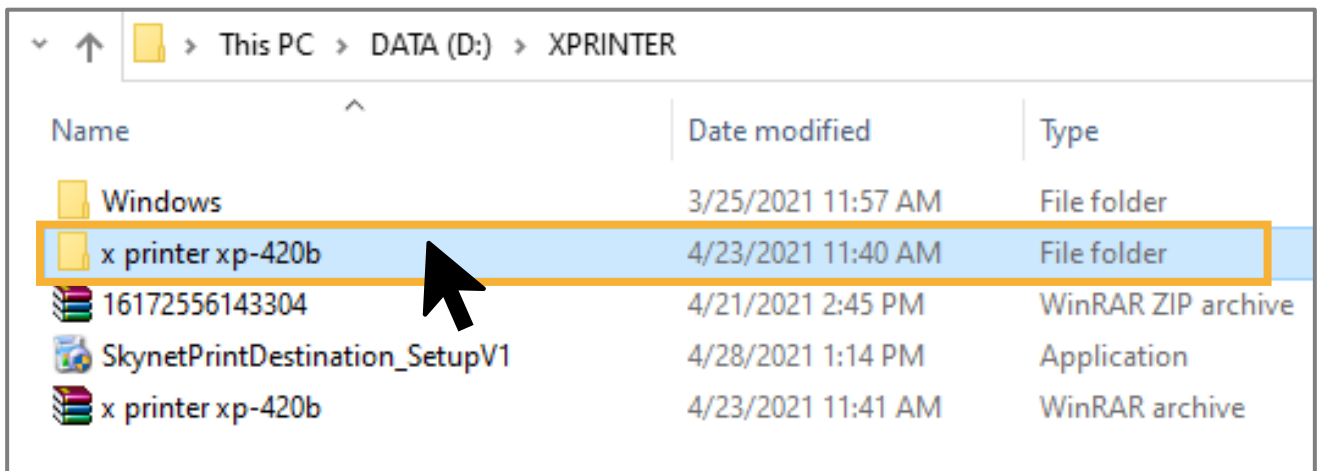
## Step 3

Click at the ZIP file and right-click. Then, click on the **Extract Here** to extract the file.



## Step 4

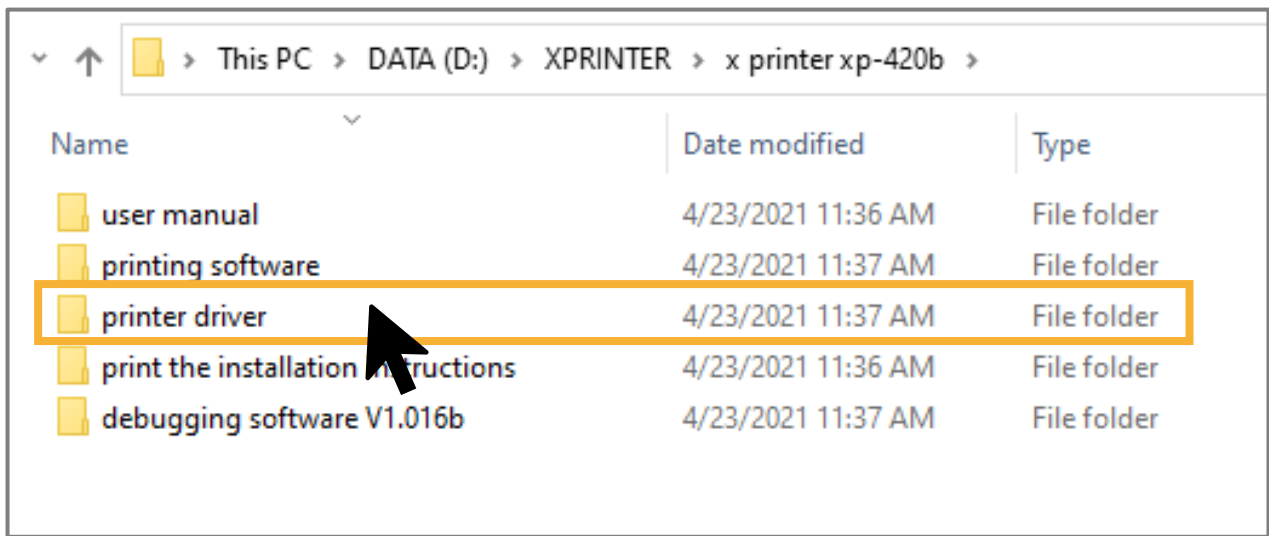
After the file is already extract, find the folder name as shown below (x printer xp-420b). Then, click to open the folder.



# C) Download & save the driver file

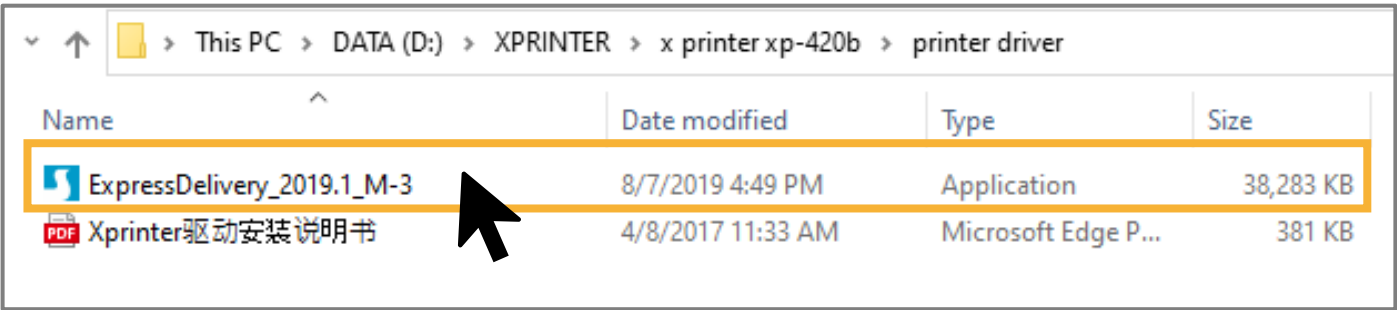
## Step 5

Click and open the **printer driver** folder to get the installer.



## Step 6

Next, double-click on the driver application and the installation will start.



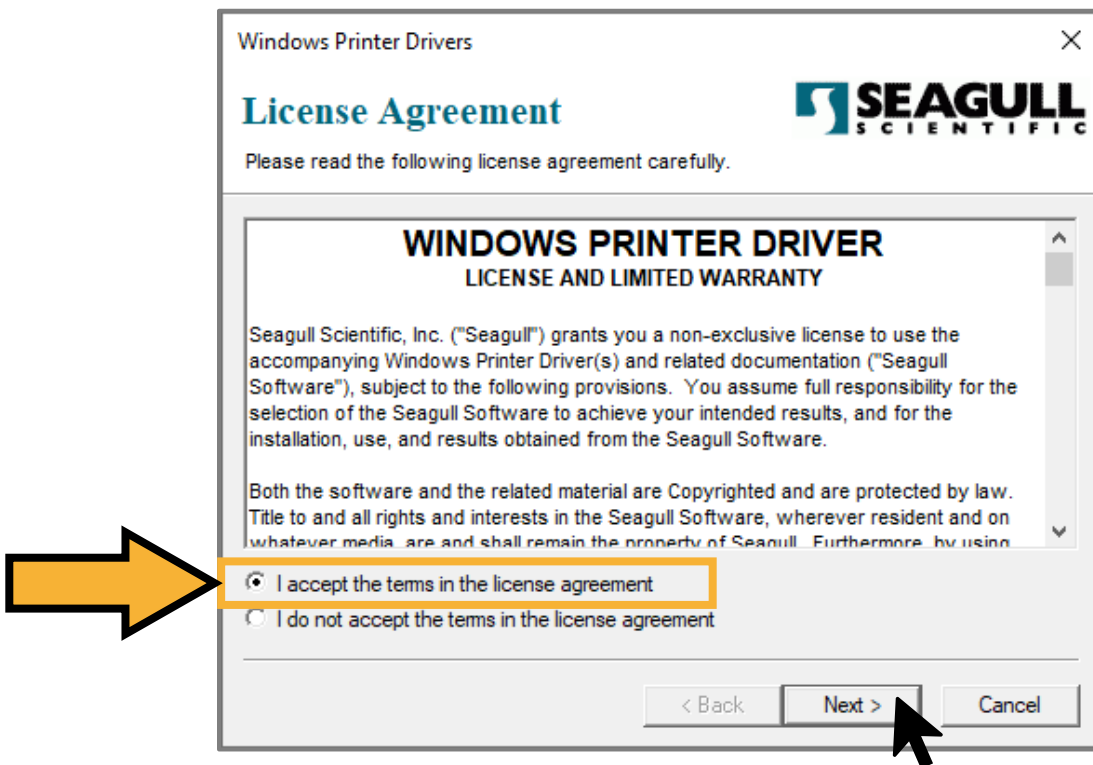


## D) Installation

Once the printer connect with the PC/laptop and the Driver successfully downloaded, continue with the installation process.

### Step 1

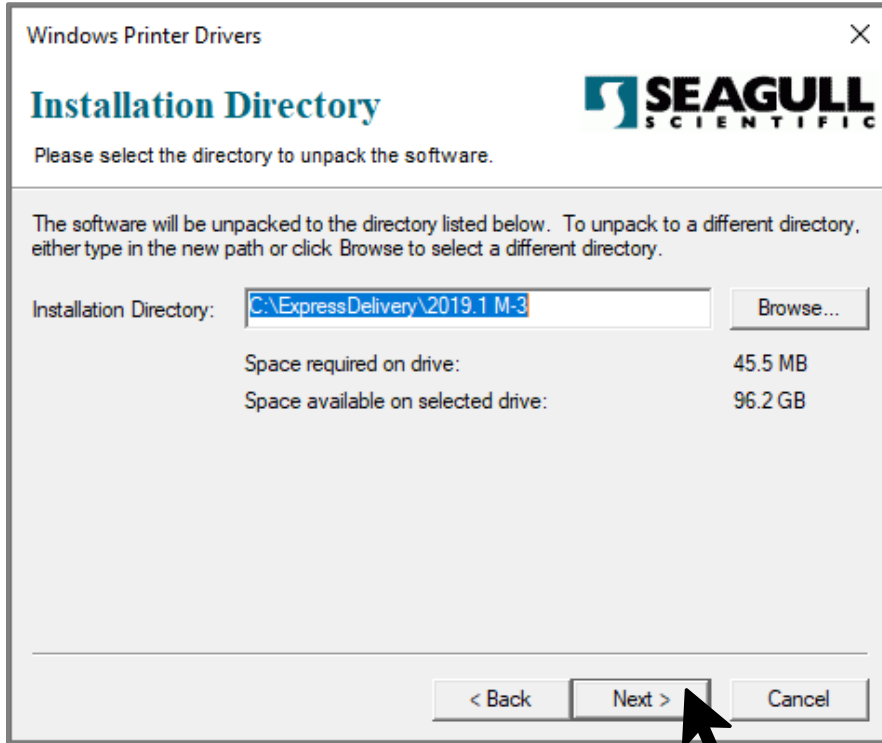
Tick *'I accept the terms in the license agreement'*. Then, click on the **Next** button.



# D) Installation

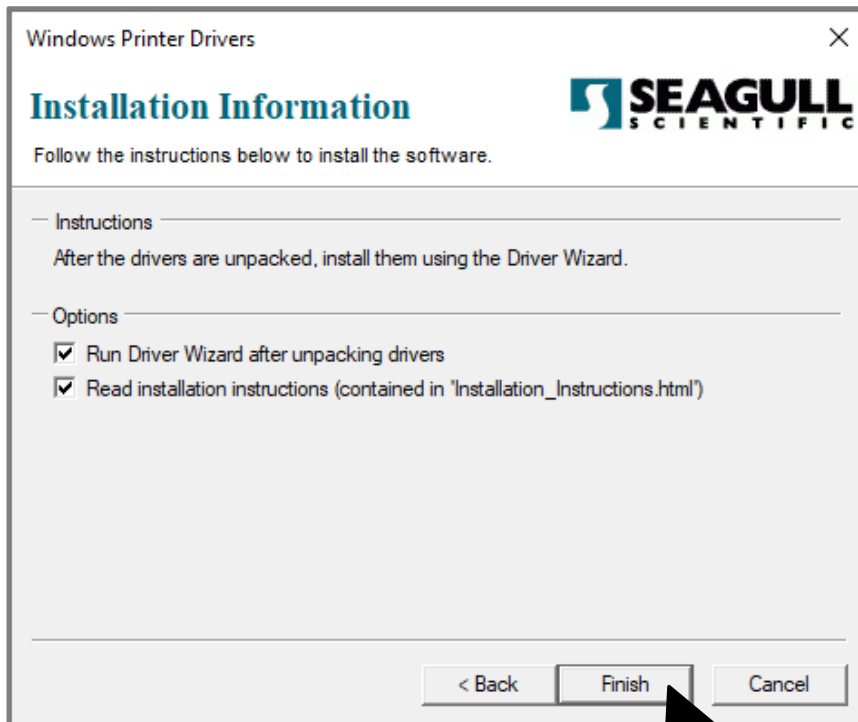
## Step 2

Click on the **Next** button.



## Step 3

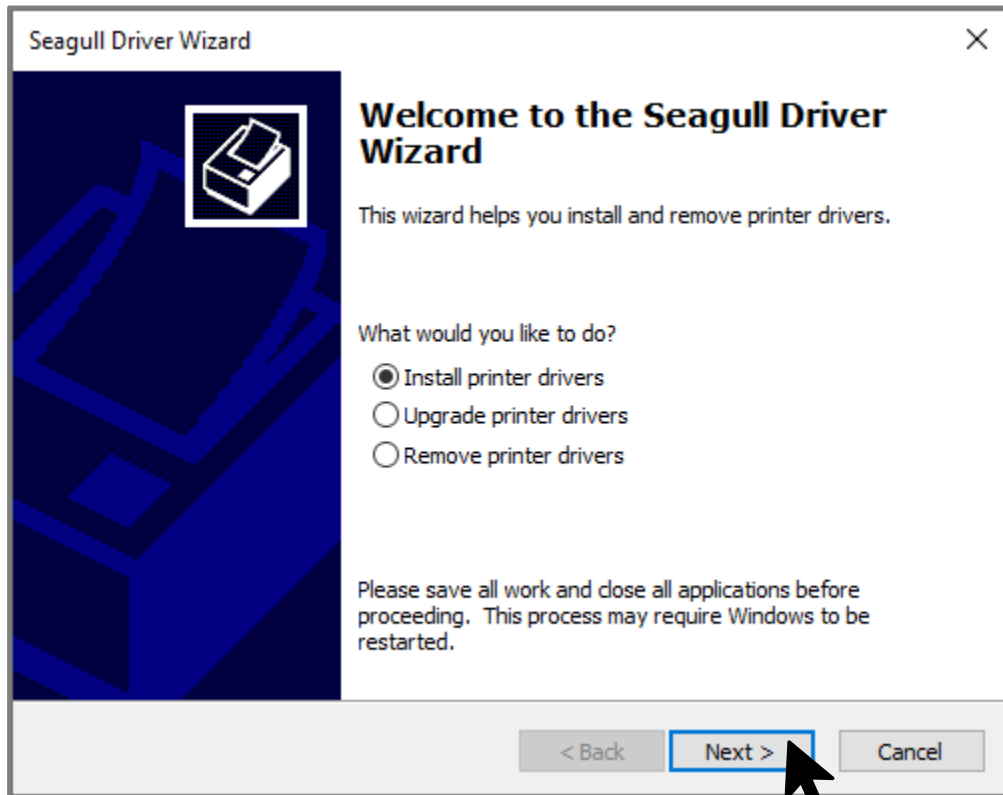
Click on the **Finish** button.



# D) Installation

## Step 4

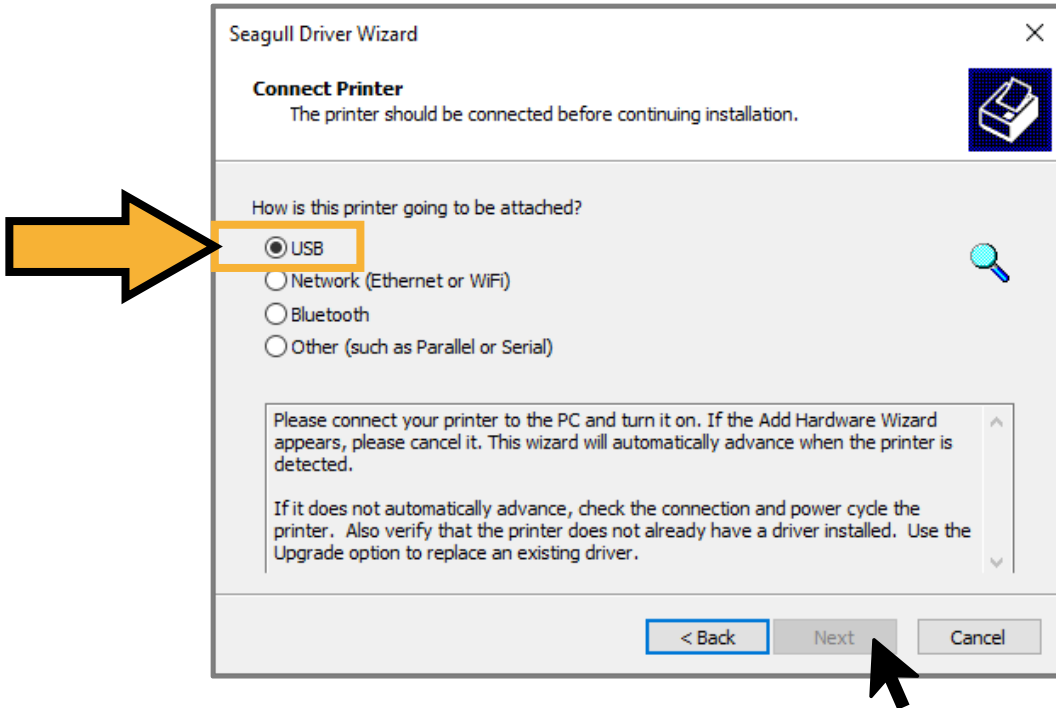
Tick to *'Install printer drivers'*. Then, click on the **Next** button.



# D) Installation

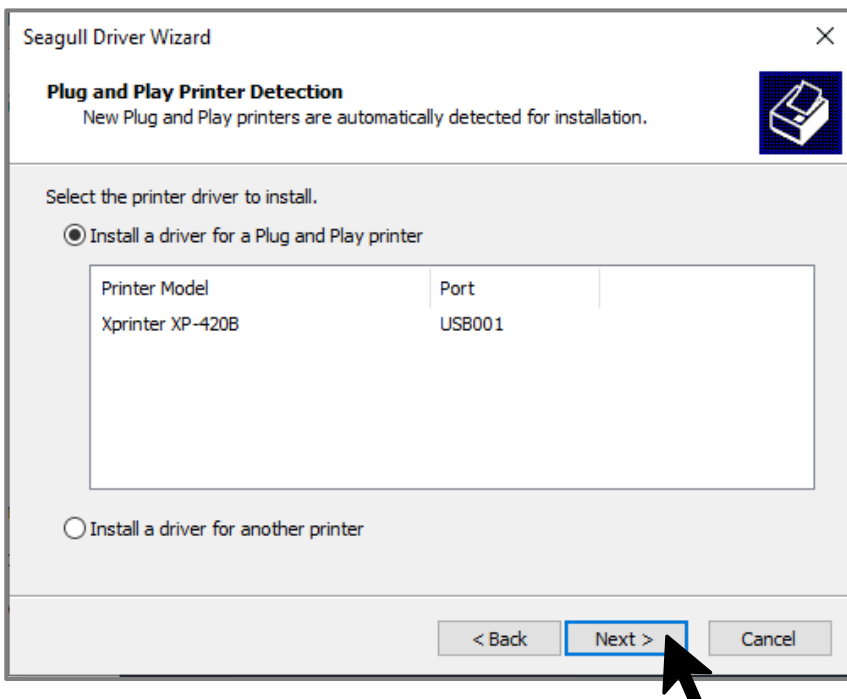
## Step 5

Make sure the printer has already connected with the PC/laptop. Then, tick at the **USB** and click on the **Next** button.



## Step 6

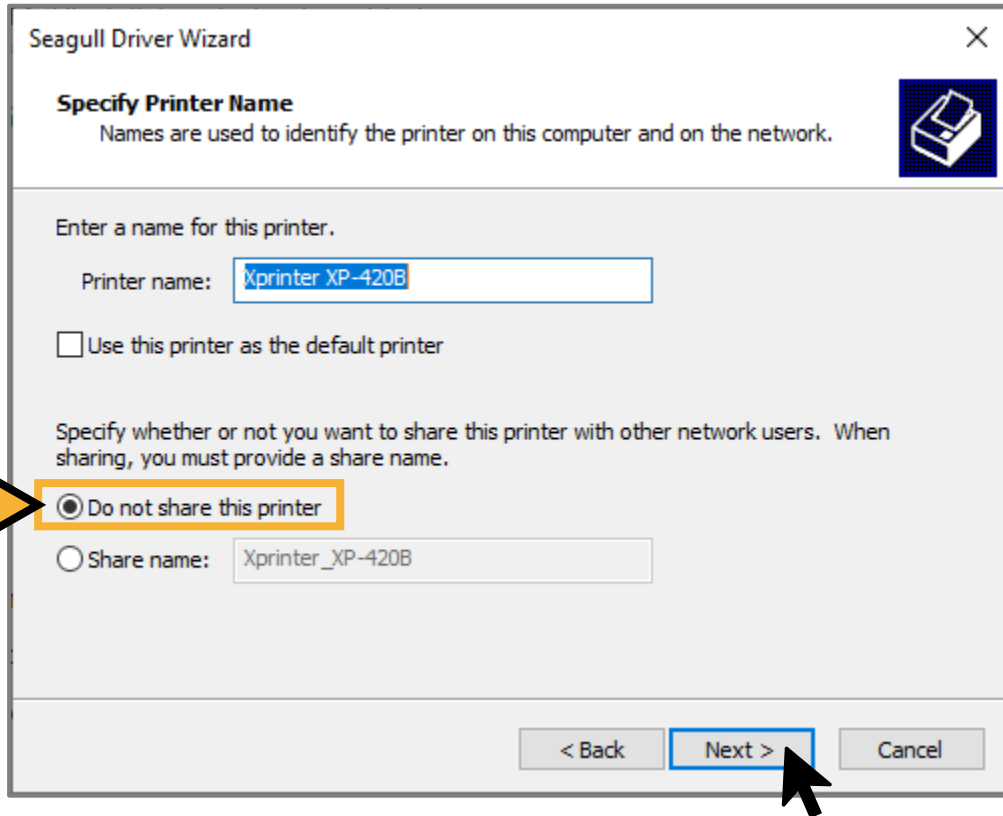
Once the USB is detected, this screen will appear. Next, click on the **Next** button.



# D) Installation

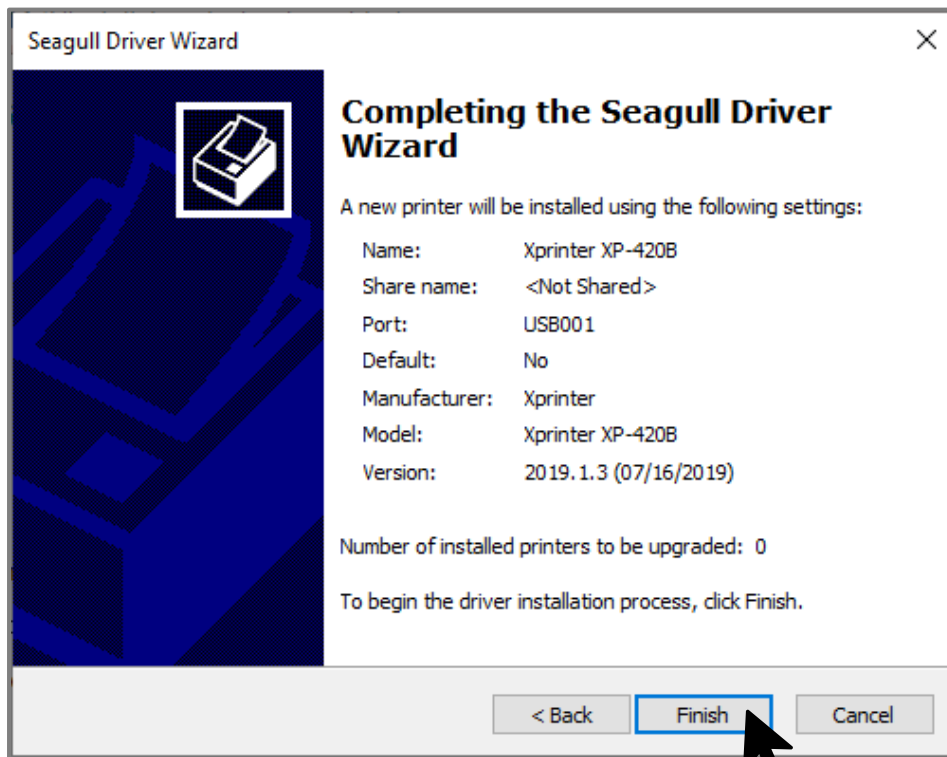
## Step 7

Select 'Do not share the printer' and click on the **Next** button.



## Step 8

Click on the **Finish** button.



## E) Printer setting

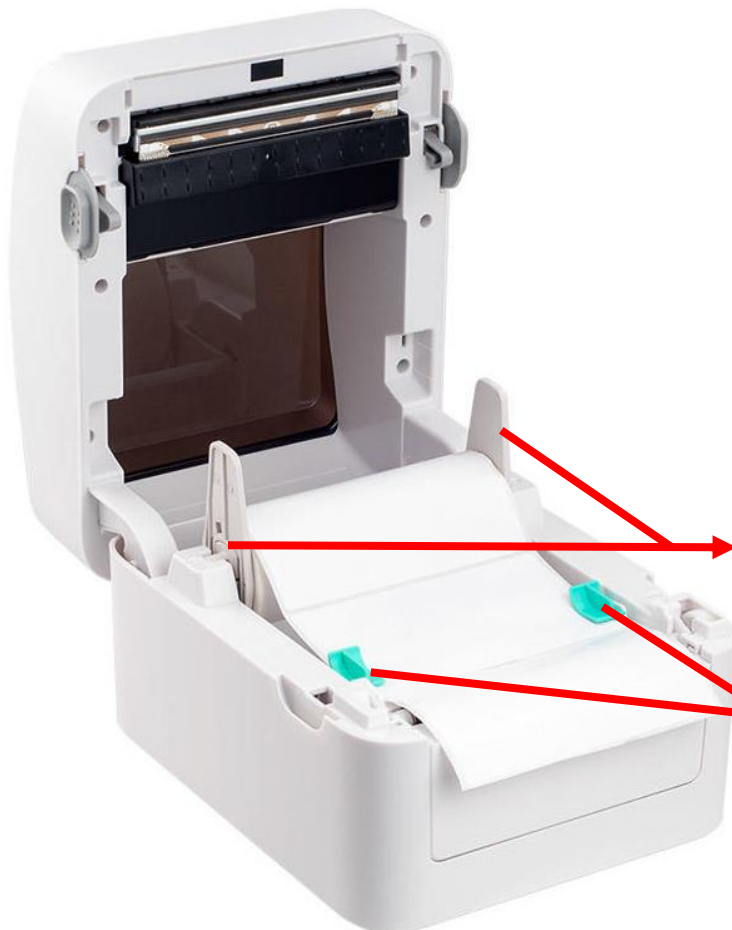
Use the paper spindle to insert the paper roll and do the calibration process.



### Step 1

Open the top cover.

- Press the button on both sides and pull forward.



### Step 2

Insert the paper roll.

- Insert the paper using the paper spindle.
- Then, use the clips on both sides to secure the paper.

Paper spindle

Secure clips

## E) Printer setting



### Step 3

Close the top cover.

- Leave some excess paper as shown for the calibration process.

### Step 4

Calibration process:

- Press the feed button until the LED light color change from blue to red color.
- The calibration process is to detect the actual size of the paper.



LED indicator

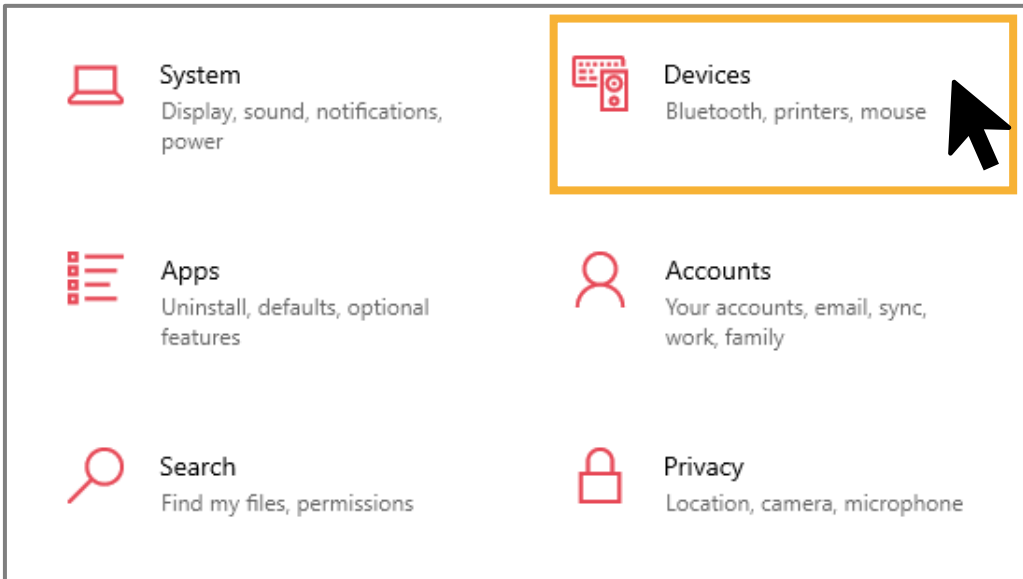
Feed button

# F) Size setting

After the calibration process complete, do the size setting for the new printer installed. This is to ensure that the measurements are correct and there are no errors during printing.

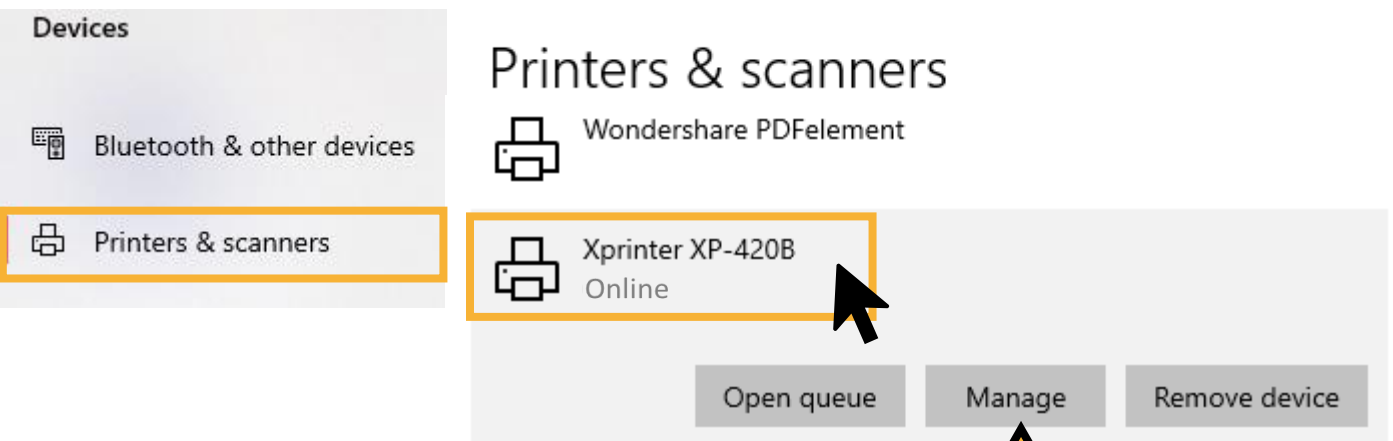
## Step 1

Go to setting and click on the **Devices**.



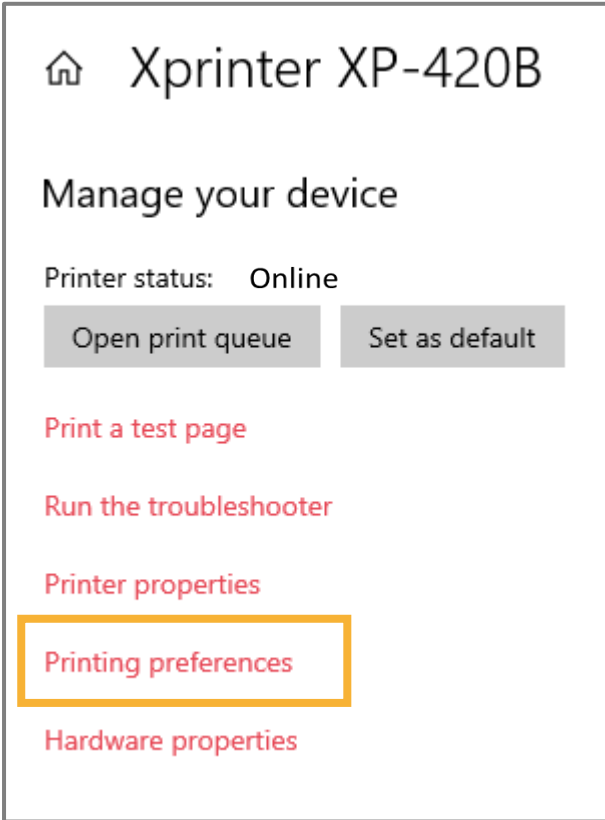
## Step 2

Then, go to **Printers & scanners** and find the Xprinter XP-420B. Click on the printer and select the **Manage** button.



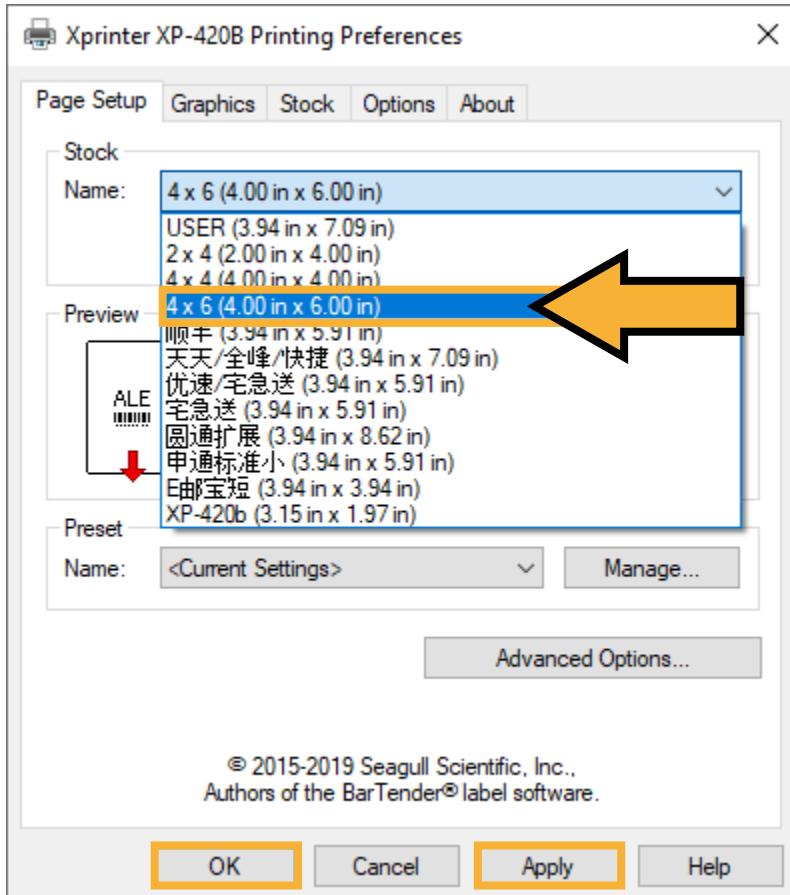


# F) Size setting



## Step 3

Go to **Printing Preferences** to set the paper size for Xprinter XP-420B.



## Step 4

In the **Page Setup**, choose the paper size which is 4 x 6 (4.00in x 6.00in) for A6 size.

After that, click on the **Apply** button. Then, click on the **OK** button.

(2)

(1)

---

# Thank You

---